

Tree Treasures

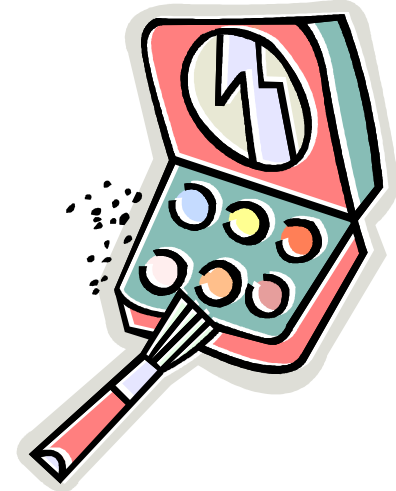
All graphics from Microsoft Clip Art Gallery @ <http://office.microsoft.com/en-us/default.aspx>



Crayons



Ink



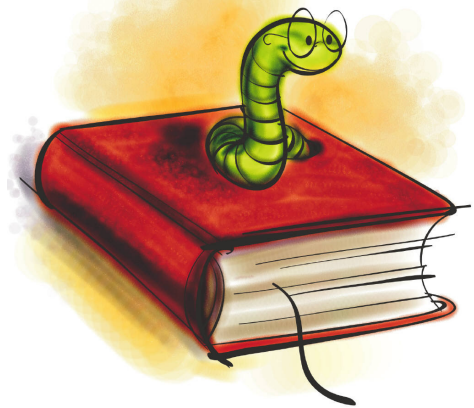
Make-Up



Glue



Pencils



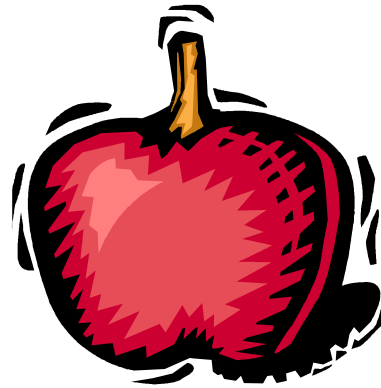
Books

Tree Treasures

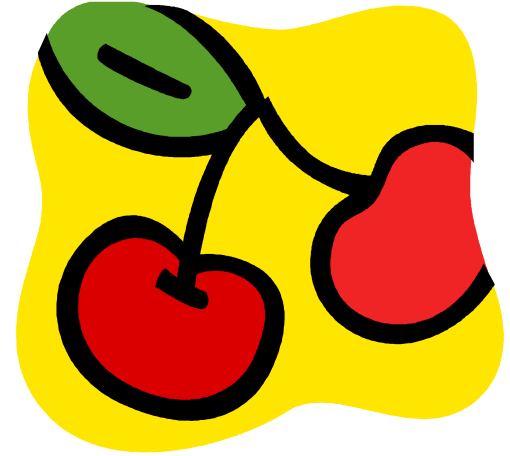
All graphics from Microsoft Clip Art Gallery @ <http://office.microsoft.com/en-us/default.aspx>



Paper



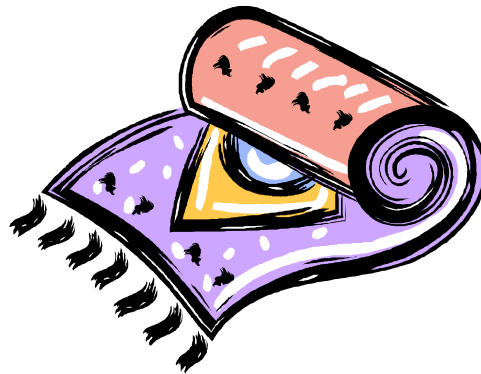
Apples



Cherries



Furniture



Carpeting



Medicine

Tree Treasures

All graphics from Microsoft Clip Art Gallery @ <http://office.microsoft.com/en-us/default.aspx>



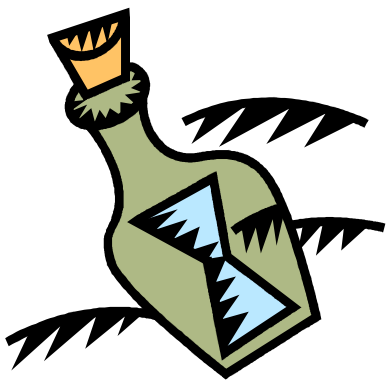
Baseball Bat



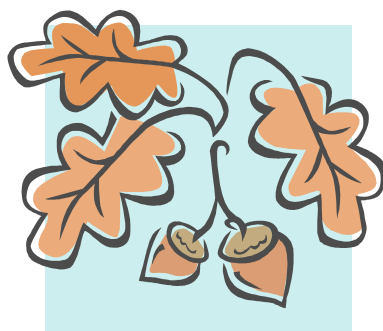
Hammer



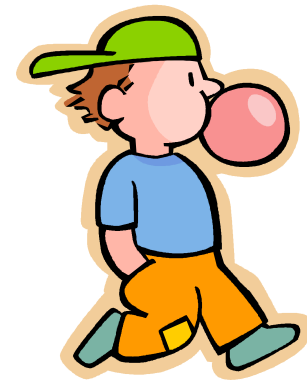
Soap



Cork



Nuts



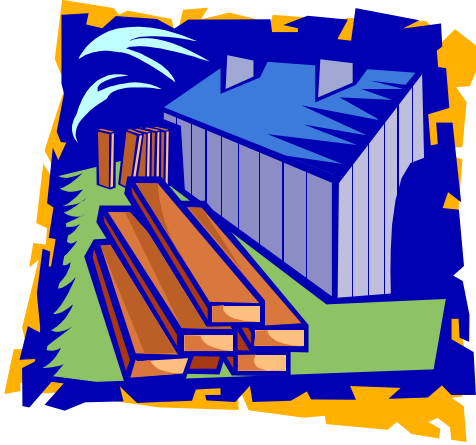
Bubble Gum

Tree Treasures

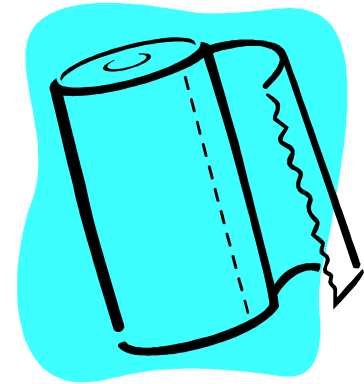
All graphics from Microsoft Clip Art Gallery @ <http://office.microsoft.com/en-us/default.aspx>



Shampoo



Lumber



Paper Towels



Clothespin



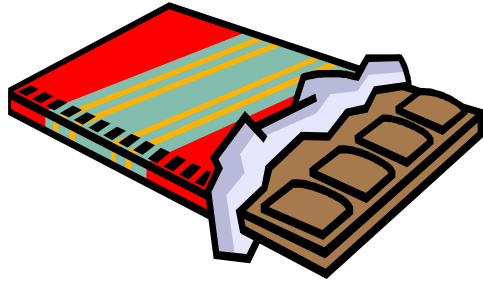
Toys



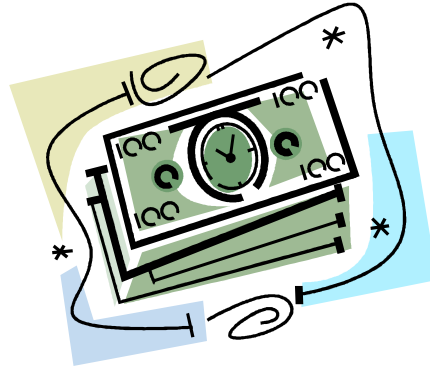
Coffee

Tree Treasures

All graphics from Microsoft Clip Art Gallery @ <http://office.microsoft.com/en-us/default.aspx>



Chocolate



Money



Instruments

Objective: Students will learn about the products made from trees as they play a version of the “20 Questions” game. All the items on the cards are made from trees – wood, fruit, sap, etc.

Materials:

Set of Tree Treasures cards (Laminate if possible to keep them in good shape.)

Clothespins

Procedure:

1. Pair students up and have students stand facing one another.
2. Use clothespins to clip one of the Tree Treasures cards on the back of each student. No peeking allowed!
3. Students are only allowed to ask questions that can be answered with a yes or a no. If a student asks an improper question, their partner should respond with “I cannot answer that question”. All questions (proper and improper) count towards their limit of 20 questions.
4. Students are allowed up to 20 questions before they have to guess the item. Keep track of the students who are able to guess their item with the fewest questions.

Extension Ideas:

- Have students research the items listed on the Tree Treasures cards to learn about how they are made and the types of trees that are used.
- Use the cards to classify items based on where they were “born”, or what regions of the world where the tree they came from is found. Label a world map to show the distribution of products.