

# Eyewitness Insects Video Quiz

Name \_\_\_\_\_

Choose the BEST answer for each question as you watch the video.

- \_\_\_ 1. Which appeared first on Earth?  
A. Humans                      B. Insects                      C. Dinosaurs
- \_\_\_ 2. Complete the statement: There are \_\_\_ million insects for every one of us.  
A. 100                      B. 200                      C. 300
- \_\_\_ 3. We might say that someone is "busy as a \_\_\_" if they are working hard at a job.  
A. cricket                      B. beetle                      C. bee



- \_\_\_ 4. In Egyptian mythology, the \_\_\_ beetle was considered sacred because their actions reminded them of the sun God, Ra.  
A. Goliath                      B. Lady bug                      C. Scarab

- \_\_\_ 5. An insect has \_\_\_ body sections.  
A. 2                      B. 3                      C. 4



- \_\_\_ 6. An invertebrate is an animal without a(n):  
A. backbone.                      B. a set of lungs.                      C. wings.

- \_\_\_ 7. An insect has a total of \_\_\_ legs.  
A. 3                      B. 6                      C. 8

- \_\_\_ 8. Insects take in air through small holes, or spiracles, located on their \_\_\_\_\_.  
A. heads.                      B. thorax.                      C. abdomen.



- \_\_\_ 9. One of the largest insects in the world is the:  
A. Goliath beetle                      B. Stag beetle                      C. Madagascar Hissing cockroach

- \_\_\_ 10. The earliest dragonfly fossils show that they had wingspans equal to \_\_\_ feet.  
A. 2                      B. 4                      C. 6

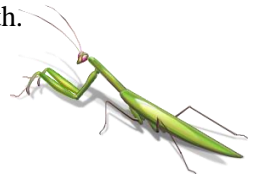
- \_\_\_ 11. Insects are important to humans because they help to \_\_\_\_\_ flowering plants.  
A. cultivate                      B. pollinate                      C. destroy

- \_\_\_ 12. Aphids can produce \_\_\_ identical offspring in one week.  
A. 25                      B. 50                      C. 100



- \_\_\_ 13. During \_\_\_ metamorphosis, an insect's life cycle passes through four stages.  
A. complete                      B. incomplete                      C. simple

- \_\_\_ 14. One old insect myth states that the sound of a \_\_\_\_\_ beetle is a sign impending death.  
A. death clock                      B. death watch                      C. death head



- \_\_\_ 15. Which insect stores air under its wings as it hangs under the surface of the water?  
A. Damselfly                      B. Dragonfly                      C. Water boatman

\_\_\_ 16. Dragonflies and damselflies grow through a process called \_\_\_ metamorphosis.  
A. complete                      B. incomplete                      C. plain



\_\_\_ 17. Bees and other insects can detect \_\_\_\_\_ light given off by flowering plants.  
A. visible                      B. infrared                      C. ultraviolet

\_\_\_ 18. A cricket's ears are located on:  
A. the sides of its head.                      B. the fronts of its legs (knees).                      C. the top of its abdomen.

\_\_\_ 19. Male moths find their mates by detecting pheromones given off by females using their \_\_\_\_\_.  
A. legs.                      B. antennae.                      C. abdomen.

\_\_\_ 20. Bombardier \_\_\_\_\_ protect themselves by mixing two chemicals and squirting a spray of hot acid.  
A. roaches                      B. spiders                      C. beetles

\_\_\_ 21. Insects use colors to protect themselves from predators by signaling that they are poisonous. Which of the following colors does NOT "scare away" enemies?  
A. Red                      B. Black                      C. Blue

\_\_\_ 22. The name for the tongue-like mouth structure used by butterflies to eat is a(n):  
A. proboscis.                      B. nectar tube.                      C. chrysalis.



\_\_\_ 23. Flies have sponge-like mouthparts and spit out \_\_\_ to help them digest their food.  
A. enzymes                      B. blood                      C. water

\_\_\_ 24. The tsetse fly can infect their victims with \_\_\_\_\_ when they feed on their blood.  
A. malaria                      B. African sleeping sickness                      C. tuberculosis

\_\_\_ 25. Leaf cutter ants gather pieces of leaves and use them to grow a fungus. What do they use it for?  
A. They use it to keep away other insects.  
B. They use it as food.  
C. They use it to build their nests.



\_\_\_ 26. The Queen of a termite colony has been known to produce \_\_\_\_\_ eggs in one day.  
A. 3,000                      B. 30,000                      C. 300,000



# Eyewitness Insects

## Video Quiz

### ANSWER KEY

- \_\_\_ 1. Which appeared first on Earth?  
A. Humans      **B. Insects**      C. Dinosaurs
- \_\_\_ 2. Complete the statement: There are \_\_\_ million insects for every one of us.  
A. 100      **B. 200**      C. 300
- \_\_\_ 3. We might say that someone is "busy as a \_\_\_" if they are working hard at a job.  
A. cricket      B. beetle      **C. bee**
- \_\_\_ 4. In Egyptian mythology, the \_\_\_ beetle was considered sacred because their actions reminded them of the sun God Ra.  
A. Goliath      B. Lady bug      **C. Scarab**
- \_\_\_ 5. An insect has \_\_\_ body sections.  
A. 2      **B. 3**      C. 4
- \_\_\_ 6. An invertebrate is an animal without a(n):  
**A. backbone.**      B. a set of lungs.      C. wings.
- \_\_\_ 7. An insect has a total of \_\_\_ legs.  
A. 3      **B. 6**      C. 8
- \_\_\_ 8. Insects take in air through small holes, or spiracles, located on their \_\_\_\_\_.  
A. heads.      B. thorax.      **C. abdomen.**
- \_\_\_ 9. One of the largest insects in the world is the:  
**A. Goliath beetle**      B. Stag beetle      C. Madagascar Hissing cockroach
- \_\_\_ 10. The earliest dragonfly fossils show that they had wingspans equal to \_\_\_ feet.  
**A. 2**      B. 4      C. 6
- \_\_\_ 11. Insects are important to humans because they help to \_\_\_\_\_ flowering plants.  
A. cultivate      **B. pollinate**      C. destroy
- \_\_\_ 12. Aphids can produce \_\_\_ identical offspring in one week.  
A. 25      **B. 50**      C. 100
- \_\_\_ 13. During \_\_\_ metamorphosis, an insect's life cycle passes through four stages.  
**A. complete**      B. incomplete      C. simple
- \_\_\_ 14. One old insect myth states that the sound of a \_\_\_\_\_ beetle is a sign impending death.  
A. death clock      **B. death watch**      C. death head
- \_\_\_ 15. Which insect stores air under its wings as it hangs under the surface of the water?  
A. Damselfly      B. Dragonfly      **C. Water boatman**

- \_\_\_ 16. Dragonflies and damselflies grow through a process called \_\_\_ metamorphosis.  
A. complete            **B. incomplete**            C. plain
- \_\_\_ 17. Bees and other insects can detect \_\_\_\_\_ light given off by flowering plants.  
A. visible            B. infrared            **C. ultraviolet**
- \_\_\_ 18. A cricket's ears are located on:  
A. the sides of its head.            **B. the fronts of its legs (knees).**            C. the top of its abdomen.
- \_\_\_ 19. Male moths find their mates by detecting pheromones using their \_\_\_\_\_.  
A. legs.            **B. antennae.**            C. abdomen.
- \_\_\_ 20. Bombardier \_\_\_\_\_ protect themselves by mixing two chemicals and squirting a spray of hot acid.  
A. roaches            B. spiders            **C. beetles**
- \_\_\_ 21. Insects use colors to protect themselves from predators by signaling that they are poisonous. Which of the following colors does NOT "scare away" enemies?  
A. Red            B. Black            **C. Blue**
- \_\_\_ 22. The name for the tongue-like mouth structure used by butterflies to eat is a(n):  
**A. proboscis.**            B. nectar tube.            C. chrysalis.
- \_\_\_ 23. Flies have sponge-like mouthparts and spit out \_\_\_ to help them digest their food.  
**A. enzymes**            B. blood            C. water
- \_\_\_ 24. The tsetse fly can infect their victims with \_\_\_\_\_ when they feed on their blood.  
A. malaria            **B. African sleeping sickness**            C. tuberculosis
- \_\_\_ 25. Leaf cutter ants gather pieces of leaves and use them to grow a fungus. What do they use it for?  
A. They use it to keep away other insects.  
**B. They use it as food.**  
C. They use it to build their nests.
- \_\_\_ 26. The Queen of a termite colony has been known to produce \_\_\_\_\_ eggs in one day.  
A. 3,000            **B. 30,000**            C. 300,000