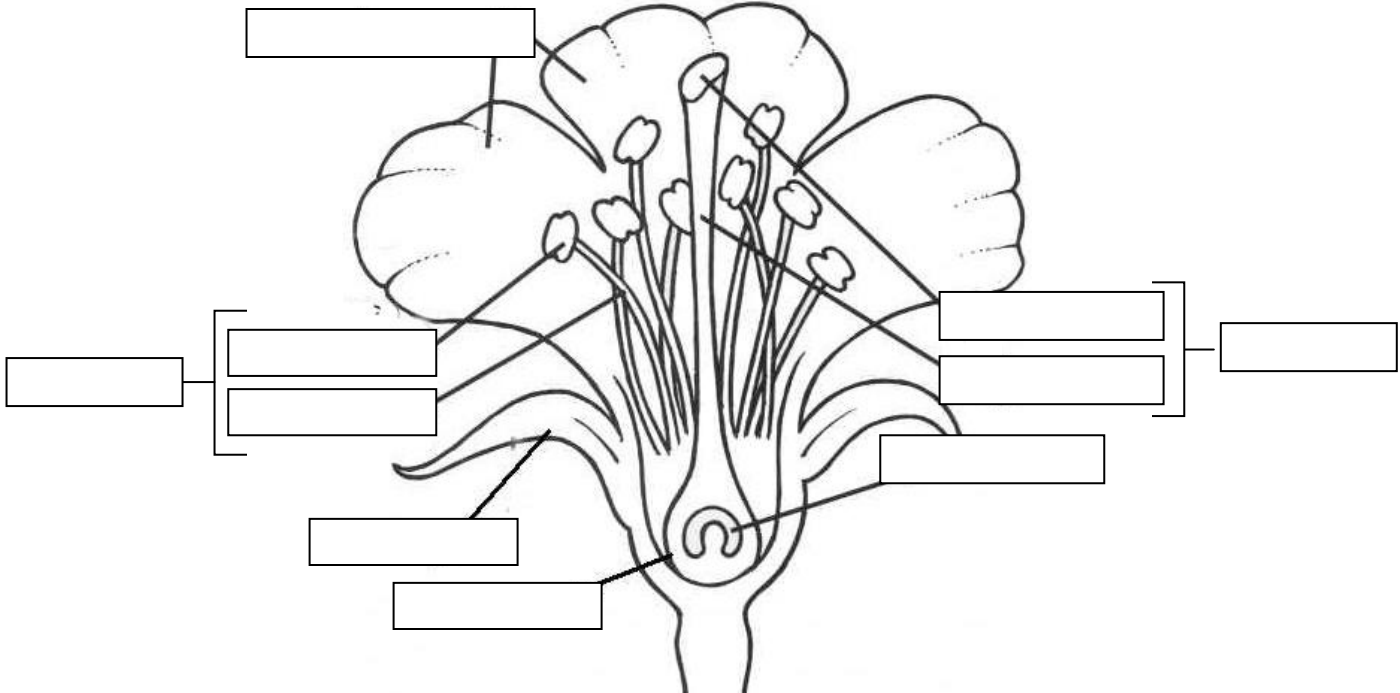


Flower Basics

Name _____

1. Label the parts of the flower shown in the diagram below.



2. Identify each part of the flower described below using the words in the word list.

- _____ - The female part of a flower
- _____ - A small plant that is just starting to grow
- _____ - The place where pollen develops and is stored
- _____ - The female sex cell in a plant
- _____ - Occurs when the sperm and egg cells unite
- _____ - A sugary substance that attracts insects
- _____ - The male sex cell in a plant
- _____ - The male part of a flower
- _____ - The stalk that supports the anther
- _____ - The part of the pistil that receives the pollen
- _____ - Part that connects the stigma and ovary
- _____ - Protective leaf-like enclosure for the flower bud
- _____ - The ripened ovary of a plant that contains seeds
- _____ - Flower that contains both male and female parts
- _____ - Flower that lacks either male or female parts
- _____ - The structures that make up the outside of the flower and may be colored or contain nectar or perfume glands

Word List:
 Anther
 Fertilization
 Filament
 Fruit
 Imperfect
 Nectar
 Ovary
 Perfect
 Petals
 Pistil
 Pollen
 Seedling
 Sepals
 Stamen
 Stigma
 Style

Image: <http://www.smithlifescience.com/SciFlowerDiagramBlank.jpg>

3. What is the difference between self-pollination and cross-pollination?

Challenge: Pollinators are important to the natural world as well as humans! Can you unscramble the names of these pollinators?

_____ N A S T

_____ T U B T R E L I F E S

_____ T S B A

_____ L I E F S

_____ E B E S

_____ E T E B E L S

_____ T H O M S

_____ _____ T U R E U B S G

_____ D R B I S

Did you know?

Honey bees are the most common pollinators. What insect comes in second place? _____